

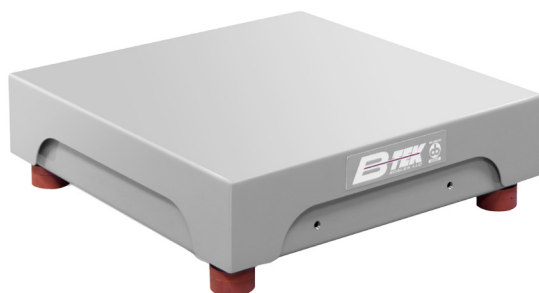
High Resolution Bench Scale Specifications



Industrial Bench Scale



AquaShield/AquaShield Max



DuraShield

Our high resolution bench scale specifications are an addition to our standard NTEP specifications and have been created using internal NTEP testing reports and extended high resolution testing to determine the best specifications for these products.

NTEP Verifiable e/Nmax			Non-Verifiable e/Nmax	
Capacity	Approved	Nmax	Recommended	Nmax
5lb/2.5kg/2500	(.001lb)/.0005kg/0.5g	5000	(.0002lb)/.0001kg/0.1g	25000
10lb/5kg/5000g	(.002lb)/.001kg/1g	5000	(.0005lb)/.0002kg/0.2g	20000
20lb/10kg/10000g	(.005lb)/.002kg/2g	4000	(.001lb)/.0005kg/0.5g	20000
30lb/15kg/15000g	(.01lb)/.005kg/5g	3000	(.002lb)/.001kg/1g	15000
50lb/25kg/25000g	(.01lb)/.005kg/5g	5000	(.002lb)/.001kg/1g	25000
75lb/35kg/35000g	(.02lb)/.01kg/10g	3750	(.005lb)/.002kg/2g	15000
100lb/50kg/50000g	(.02lb)/.01kg/10g	5000	(.005lb)/.002kg/2g	20000
150lb/75kg/75000g	(.05lb)/.02kg/20g	3000	(.02lb)/.01kg/10g	15000
200lb/100kg/100000g	(.05lb)/.02kg/20g	4000	(.01lb)/.005kg/5g	20000
300lb/150kg/150000g	(.1lb)/.05kg/50g	3000	(.02lb)/.01kg/10g	15000
500lb/250kg/250000g	(.1lb)/.05kg/50g	5000	(.02lb)/.01kg/10g	25000

B-TEK's High-resolution recommended divisions are achieved based on capable indicating elements used with your B-TEK base and the scale environment. The recommended divisions are based on testing conducted using capable equipment in a controlled environment at ambient temperature without vibration or draft and had an accuracy of +/- 5 divisions at full capacity.