

# DuraShield Bench Scale

Durable  
Precise  
Reliable

The B-TEK DuraShield Bench Scale features formed steel construction to ensure long-term performance. It is designed for high performance and reliability in a variety of industrial applications, including general-purpose weighing, check weighing, packaging and other high-accuracy industrial weighing applications.



#### Robust Construction

Formed carbon steel platter and base ensure strength and durability

#### Industrial-Grade Powder Coating

Protects against corrosion, chemicals, heat and abrasion

#### NTEP and Canadian Certified

Accurate precision up to 5,000 counts, down to the hundredth of a pound

# DuraShield Bench Scale

Durable  
Precise  
Reliable

## Features and Specifications

- NTEP COC: 20-042A1
- Canadian Approval: AM-6145 REV. 1
- Type: Single-point bench scale
- Scale Capacity: 50, 100 and 200 lb
- Scale Height: 4"
- Available Sizes: 12" x 12" and 18" x 18"
- Weighbridge: Carbon steel powder coated formed base, frame and spider
- Platter: Carbon steel powder coated (stainless option available)
- Load Cell: B-TEK ASP-1, IP65 single point with 10' cable
- Feet: FDA Compliant
- Indicator: Can be used with most industry-approved indicators
- Warranty: 2-year on weighbridge steel structure, 3-year on load cell

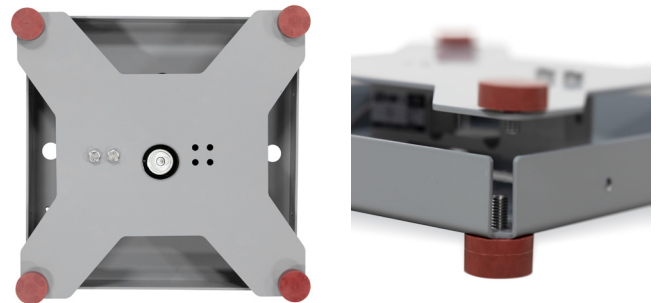
## Options

- Scale Indicator
- Adjustable Column and Hardware Kit
- Stainless Steel Platter
- Stack Light (IP65 and IP69K)
- Factory Calibration



Shown with Optional Column and D70ES Indicator

Platter Size	Capacity and Size Resolution (lb)	Capacity and Size Resolution (kg)
12 x 12	50 lb x 0.01 lb	25 kg x 0.005 kg
12 x 12	100 lb x 0.02 lb	50 kg x 0.01 kg
12 x 12	200 lb x 0.05 lb	100 kg x 0.02 kg
18 x 18	50 lb x 0.01 lb	25 kg x 0.005 kg
18 x 18	100 lb x 0.02 lb	50 kg x 0.01 kg
18 x 18	200 lb x 0.05 lb	100 kg x 0.02 kg



Rugged Formed Steel Construction

