

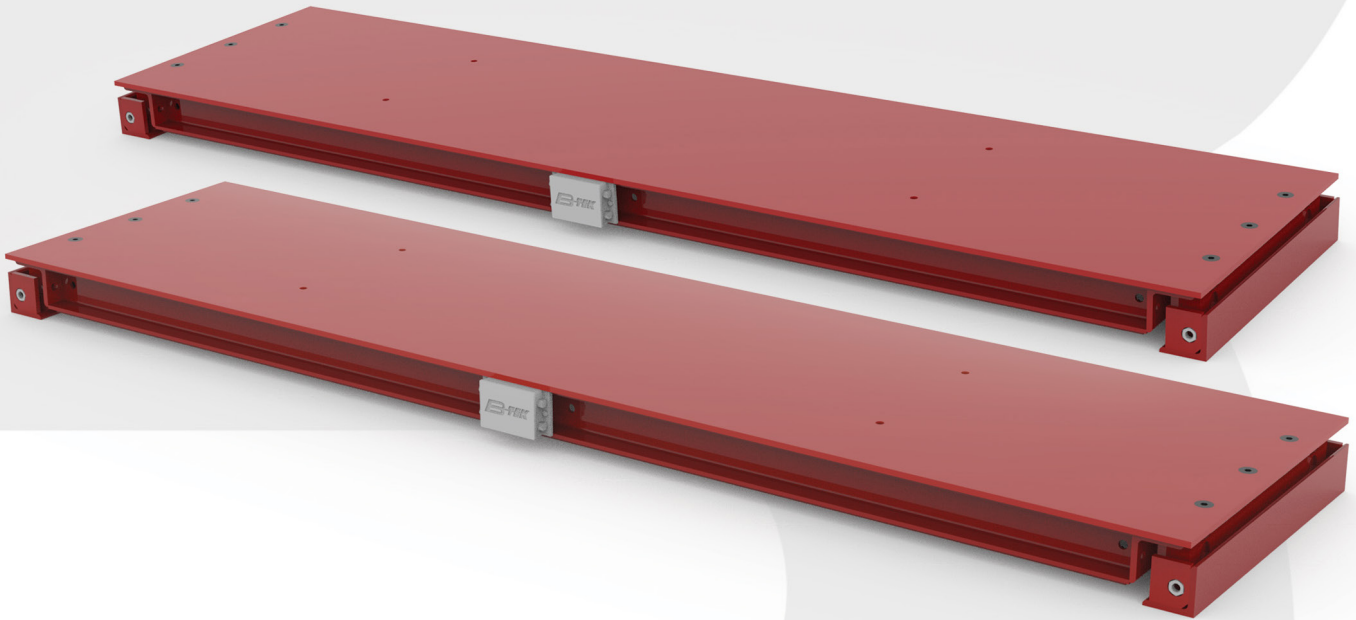
AX200

Portable Axle Scale

**Portable
Strong
Dependable**

Offering a versatile and heavy-duty design, B-TEK's AX200 Portable Axle Scale system is ideal for accurately checking individual vehicle axle weights. The weights are used to minimize the risk of overweight fines due to individual axles that exceed state maximum limits. The axle weights can also be accumulated to ensure trucks are not under loaded maximizing the productivity load.

The AX200 Portable Axle Scale is offered in four standard platform lengths as well as custom sizes to fit new or existing applications. Two rigidly mounted load cells per platform feature no moving suspension parts to wear or load feet to bend or break. Platforms are constructed with I-beams and 1/2" tread plate decking, the thickest decking of any axle scale on the market.



No Concrete or Foundation Construction Required

Installs on top of concrete, asphalt, well-compacted gravel or flush with grade

1/2" Tread Plate Decking

The thickest deck plating in the industry for ultimate durability

Two-component Polyamide Epoxy Paint System

Durable surface to protect your investment

Superior Platform Construction

Built with I-beams for maximum strength

Stainless Steel Junction Box

Strong protection for wire terminations

Robust Load Cells

(2) 25,000 lb. load cells per platform

AX200

Portable Axle Scale

Portable
Strong
Dependable

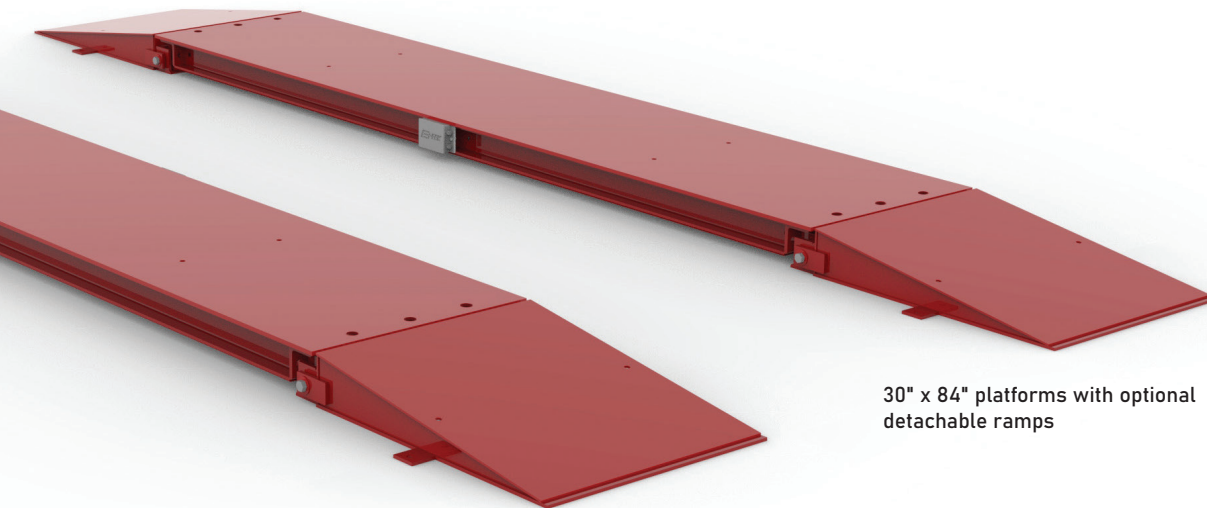
Specifications

- Certificate of Conformance: NON-NTEP
- Above ground portable axle scales - optional ramps are detachable
- Scale Capacity: 60,000 lb gross system capacity
- Scale Platform Length: 7', 10', 12' and 14'
- Scale Height: 6"
- Scale Width: 30"
- Scale Deck: 1/2" tread plate decking - welded to main beams
- Steel Preparation: Commercial blast cleaning SSPC-SP6
- Paint System: Two-component polyamide epoxy paint
- (2) 25,000 lb double-ended shear beam per platform
- Plated alloy steel, environmentally sealed (IP67)
- NEMA 4X stainless steel enclosure and gathering card
- 1-Year weighbridge warranty covering defects in materials and workmanship
- 1-Year load cell warranty covering defects in materials and workmanship

Options

- Detachable carbon steel ramps, 30" x 36"
- Stainless steel load cell upgrade

Width	Length	Weight	Capacity
30"	7'	1,950 lb	60K
30"	10'	2,800 lb	60K
30"	12'	3,600 lb	60K
30"	14'	4,600 lb	80K



30" x 84" platforms with optional detachable ramps

