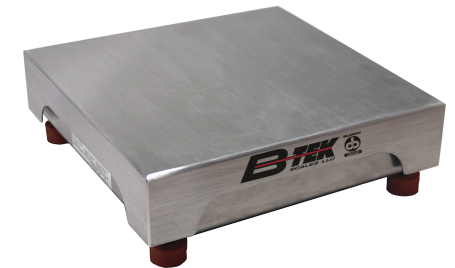




*Custom sizes upon request

Model	C100	C200	C300	WorldWEIGH WD Portion	AccuSure
NTEP	Non-NTEP	Non-NTEP	12-077A1	20-074	Non-NTEP
Available Capacities	6, 12, 30, 60, 100 lb	60, 120, 300, 600 lb	50, 100, 250 lb	6, 12, 30 lb	60 lb
Scale Height	4.66" and 5.17"	33.5" and 35.4"	18" and 24.5"	5"	5"
Available Platter Size	11.8" x 9.1" dia. / 14.5" x 9.4"	13.8" x 17.7" / 16.5" x 20.5" / 23.6" x 31.5"	12.63" x 14.18" / 15.75" x 19.68"	9" x 7.5"	14.25" x 12.75"
Platter	Stainless platter / ABS housing	Stainless platter / Epoxy painted mild steel platform	Stainless platter / Epoxy painted mild steel base frame	Stainless platter / Stainless steel IP65 base	Stainless platter / Die-cast aluminum base frame
Column	N/A	Included	Stainless steel bolt-on column	N/A	N/A
Load Cell	6, 12, 30, 60, 100 lb	L6E-50KG, L6G-100KG, L6G-200KG, L6G-500KG	50, 100, 250 lb	6, 12, 30 lb	Aluminum single point
Typical Uses	Counting High Volume Rental Fleet Budget friendly	Light Industrial Counting General Purpose Weighing	Light Industrial Counting General Purpose Weighing	Food Portioning	High Precision Budget Friendly
Applications	Piece Count Gross Weight Average Piece Weight	Piece Count Gross Weight Average Piece Weight	Accumulation Parts Counting Animal Weighing Peak Hold	Checkweighing Accumulation Parts Counting Animal Weighing Peak Hold	Checkweighing Accumulation Animal Weighing Peak Hold
Resolution	6 lb x 0.0001 lb 12 lb x 0.0002 lb 30 lb x 0.0005 lb 60 lb x 0.001 lb 100 lb x 0.02 lb	60 lb x 0.005 lb 120 lb x 0.01 lb 300 lb x 0.02 lb 600 lb x 0.05 lb	50 lb x .01 100 lb x .02 250 lb x .05	6 lb x .001 lb 12 lb x .002 lb 30 lb x .005 lb	30 kg x 0.2 g



*Custom sizes upon request

Model	HRCS	HRB	B-TEK Industrial Bench	AquaShield
NTEP	Non-NTEP	Non-NTEP	96-169A2	20-042
Available Capacities	2, 10, 70, 175 lb / *1, 5, 25, 50, 100 lb through custom setup	2, 10, 70, 175 lb	Carbon: 5 - 500 lb Stainless: 20 - 500 lb	5, 20, 50, 100, 200 lb
Scale Height	5.75"	5.75"	4" and 5.25"	4"
Available Size	6" dia., 9" x 12", 12" x 14"	6" dia., 9" x 12", 12" x 14"	12" x 12" - 30" x 30"	10" x 10", 12" x 12", 18" x 18"
Platter	Stainless platter / Aluminum die-cast clamshell base	Stainless platter / Aluminum die-cast clamshell base	Carbon/304 stainless heavy duty formed base frame and structural tube spider	304 stainless heavy duty formed base frame and spider
Column	N/A	N/A	Optional 24" tall structural tube column with indicator mounting plate	Base: Optional 19" tall stainless open frame design / Included with T401S/T403S package
Load Cell	Quartzell load cell technology	Quartzell load cell technology	Aluminum single point - IP67, FM Approved / Stainless single point - Hermetic IP68/IP69K, FM Approved	Aluminum single point - IP65 / Stainless single point - Hermetic IP69K, FM Approved
Typical Uses	High Precision Counting Checkweighing Industrial Use	High Precision Weighing Industrial / Laboratory Use	Heavy Industrial Weighing Custom Sizes and Heights Roller Top Options	Heavy Washdown Light Industrial Food Industry
Applications	Counting Checkweighing General Weighing	Counting Checkweighing General Weighing Customizable with T-Series Indicator	Depending on the indicator chosen	General Weighing Counting Checkweighing
Resolution	2 lb x 0.00002 lb 10 lb x 0.0001 lb 70 lb x 0.001 lb 175 lb x 0.002 lb	2 lb x 0.00002 lb 10 lb x 0.0001 lb 70 lb x 0.001 lb 175 lb x 0.002 lb	5 x 0.001 lb / 10 x 0.002 lb 20 x 0.005 lb / 30 x 0.01 lb 50 x 0.01 lb / 100 x 0.02 lb 150 x 0.05 lb / 200 x 0.05 lb 300 x 0.1 lb / 500 x 0.1 lb / 1000 x 0.2 lb	5 lb x 0.001 lb 20 lb x 0.005 lb 50 lb x 0.01 lb 100 lb x 0.02 lb 200 lb x 0.05 lb